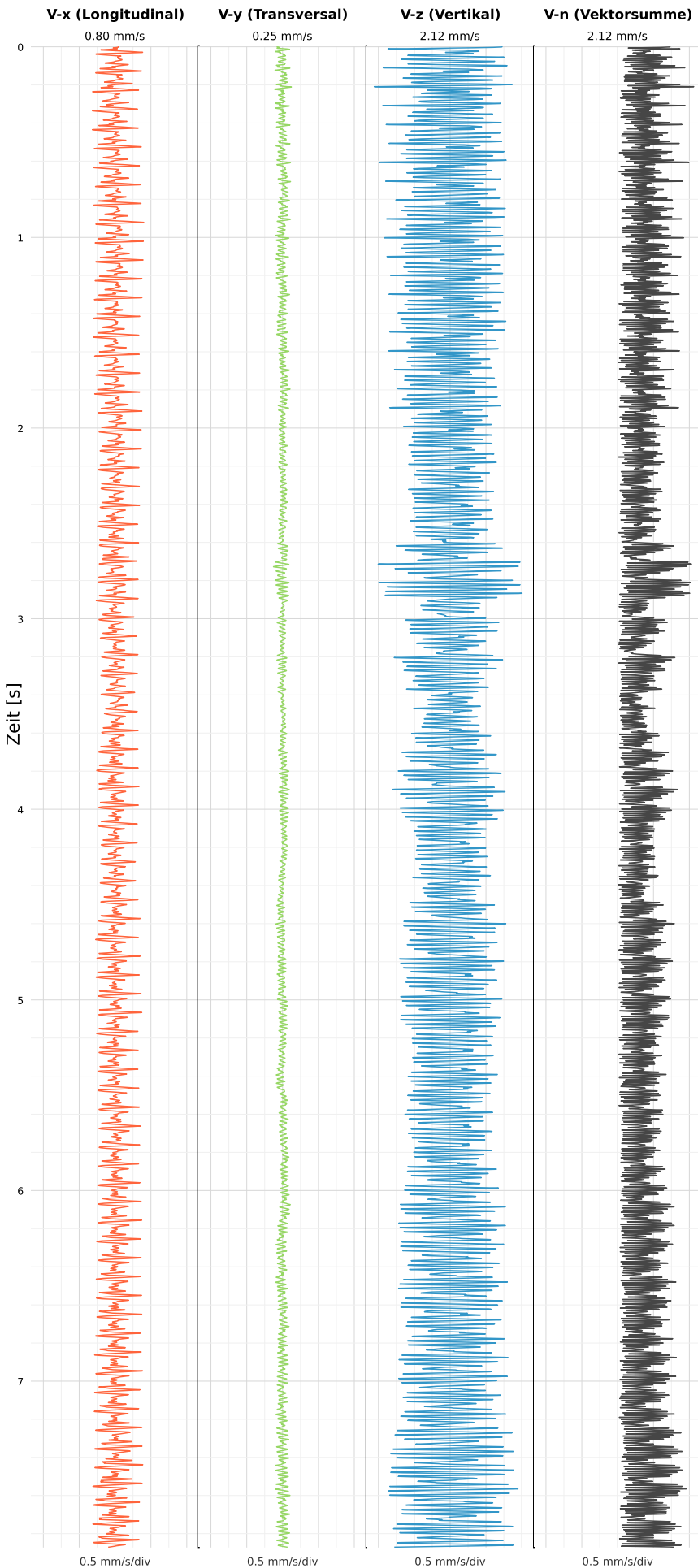


SCHWINGGESCHWINDIGKEIT



DATEI: 2492-PG14-26052026-140237_raw.csv

Aufzeichnungsdauer: 7.87 s | Abtastrate: 1000 Hz

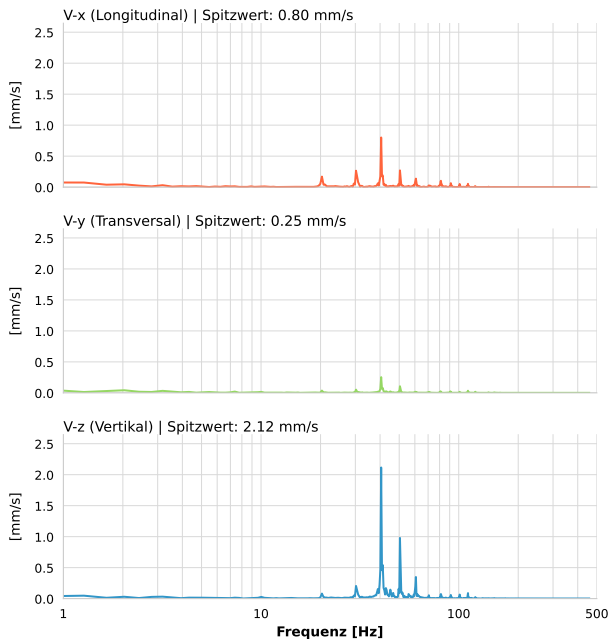
| | |
|------------------|---------------------------|
| Datum: | 10.06.2026 |
| Zeit: | 12:24:47 |
| Event-ID: | 2492-PG14-26052026-140237 |
| Kalibrier Datum: | 12.07.2025 |

Spitzwerte

| V-x (Longitudinal) | V-y (Transversal) | V-z (Vertikal) |
|--------------------|-------------------|------------------|
| 0.80 mm/s | 0.25 mm/s | 2.12 mm/s |
| 30.4 Hz | 40.5 Hz | 40.5 Hz |
| 7.94% von Limit | 2.01% von Limit | 16.76% von Limit |

V-n (Vektorsumme): 2.12 mm/s

SPEKTRALANALYSE - KOMPONENTEN FFT



| Kanal | Spitzwert | Spektrum 25% | Spektrum 50% | Spektrum 75% |
|-------|-----------|--------------|--------------|--------------|
| X | 0.80 mm/s | 31.0 Hz | 41.3 Hz | 70.6 Hz |
| Y | 0.25 mm/s | 30.2 Hz | 43.2 Hz | 88.5 Hz |
| Z | 2.12 mm/s | 40.5 Hz | 47.0 Hz | 63.4 Hz |

SPEKTRALANALYSE - FFT (DIN 4150-3)

