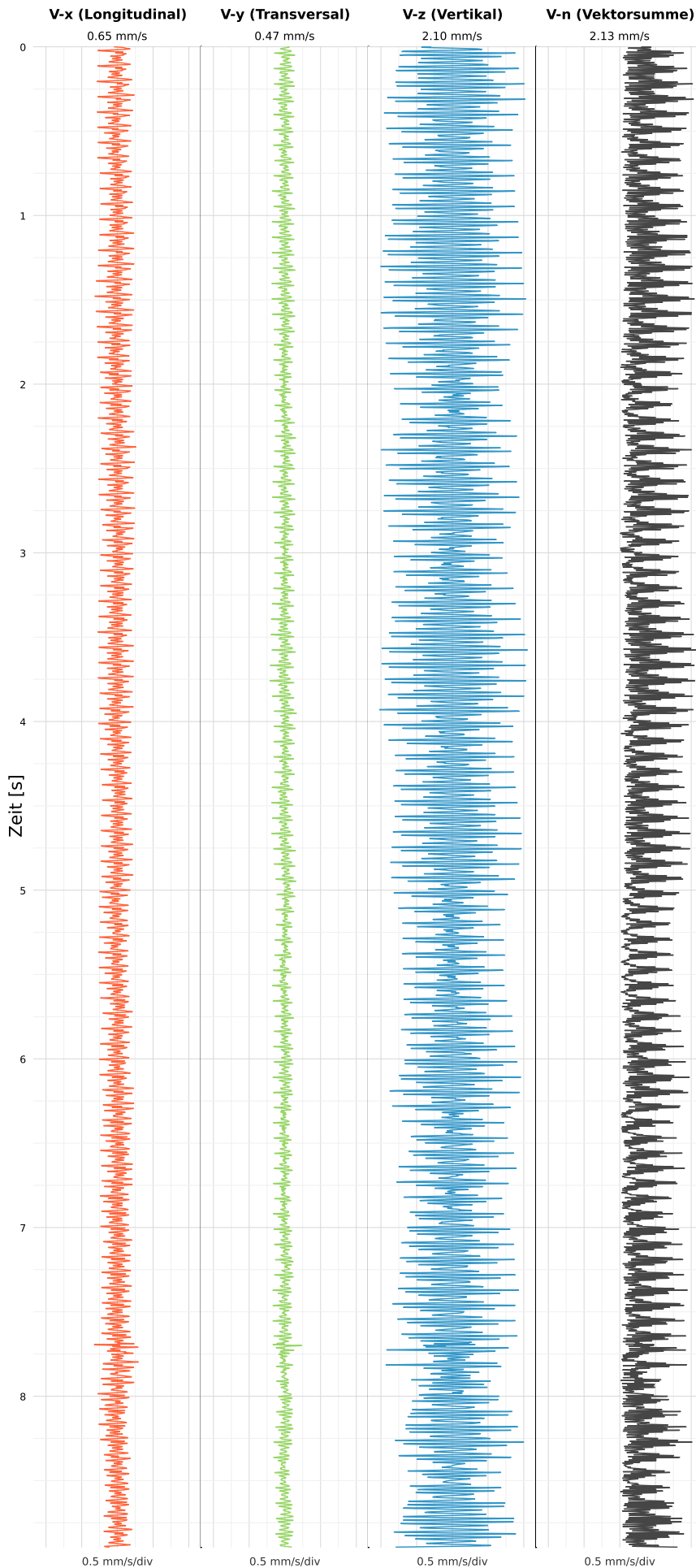


SCHWINGGESCHWINDIGKEIT



DATEI: 2492-PG14-26052026-134631_raw.csv

Aufzeichnungsdauer: 8.90 s | Abtastrate: 1000 Hz

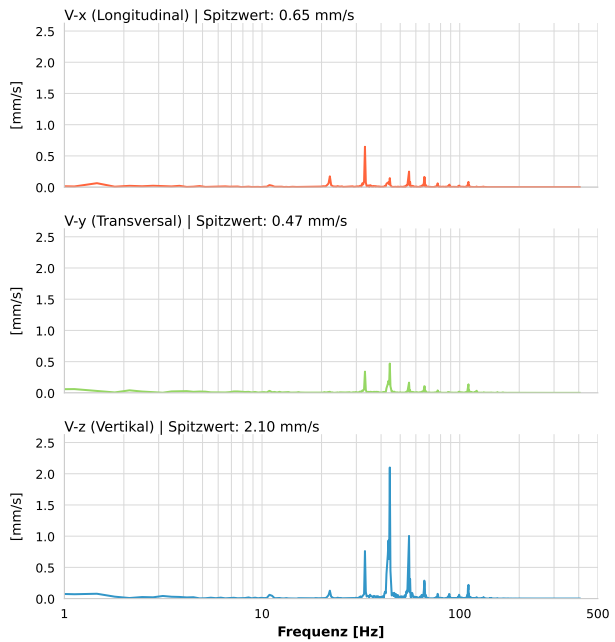
| | |
|------------------|---------------------------|
| Datum: | 26.05.2026 |
| Zeit: | 13:46:31 |
| Event-ID: | 2492-PG14-26052026-134631 |
| Kalibrier Datum: | 12.07.2025 |

Spitzwerte

| V-x (Longitudinal) | V-y (Transversal) | V-z (Vertikal) |
|--------------------|-------------------|------------------|
| 0.65 mm/s | 0.47 mm/s | 2.10 mm/s |
| 33.2 Hz | 44.3 Hz | 44.2 Hz |
| 5.99% von Limit | 3.47% von Limit | 15.51% von Limit |

V-n (Vektorsumme): 2.13 mm/s

SPEKTRALANALYSE - KOMPONENTEN FFT



| Kanal | Spitzwert | Spektrum 25% | Spektrum 50% | Spektrum 75% |
|-------|-----------|--------------|--------------|--------------|
| X | 0.65 mm/s | 33.2 Hz | 53.4 Hz | 68.6 Hz |
| Y | 0.47 mm/s | 33.5 Hz | 45.0 Hz | 90.8 Hz |
| Z | 2.10 mm/s | 43.3 Hz | 45.0 Hz | 64.5 Hz |

SPEKTRALANALYSE - FFT (DIN 4150-3)

