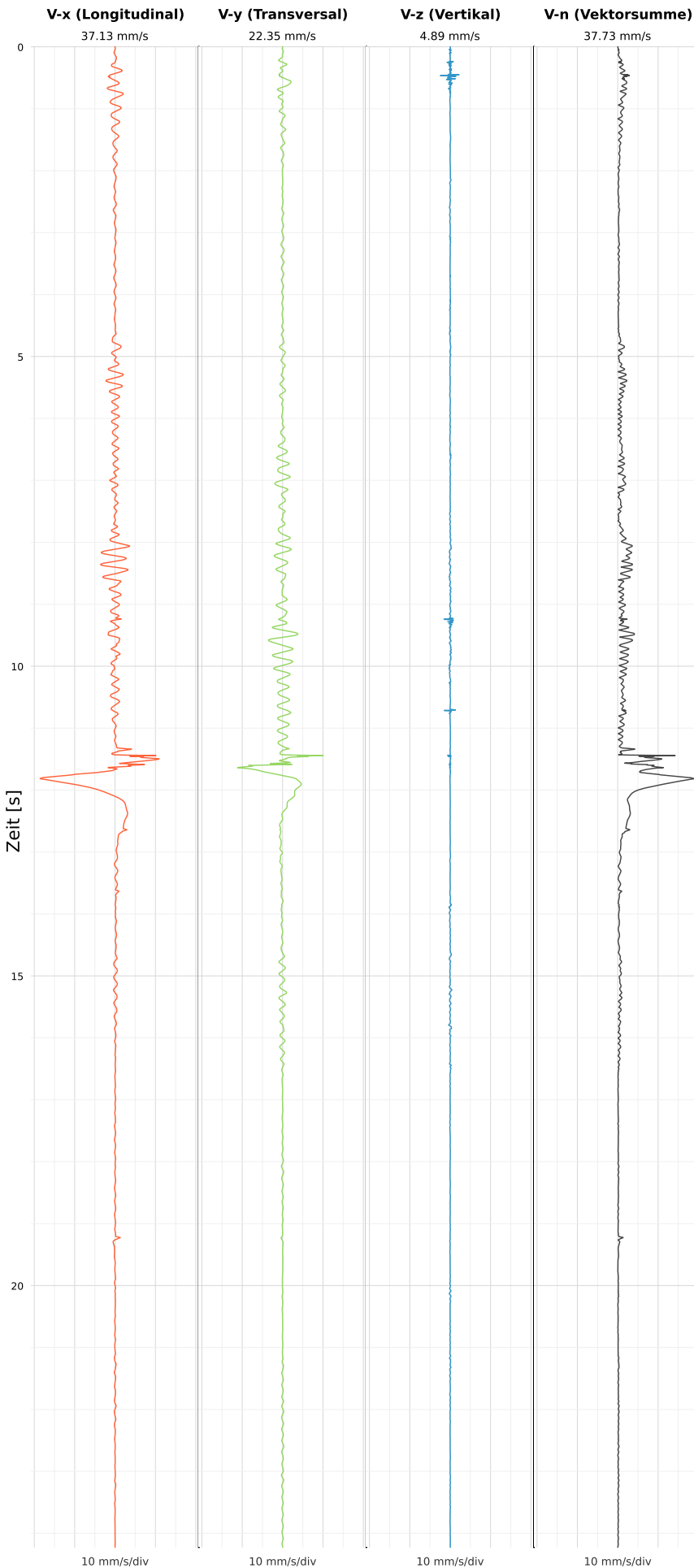


SCHWINGGESCHWINDIGKEIT



DATEI: 2434-09062026-121558_raw.csv

Aufzeichnungsdauer: 24.22 s | Abtastrate: 1000 Hz

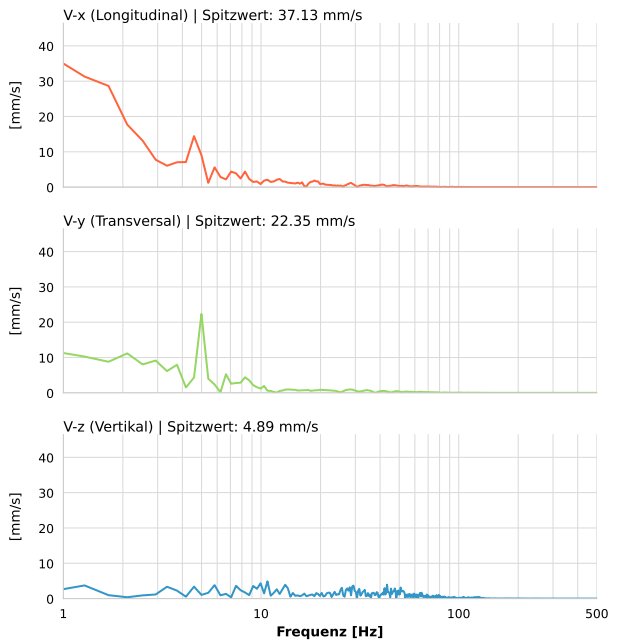
| | |
|-------------------------|----------------------|
| Datum: | 09.06.2026 |
| Zeit: | 12:15:58 |
| Event-ID: | 2434-09062026-121558 |
| Kalibrier Datum: | 10.07.2025 |

Spitzwerte

| V-x (Longitudinal) | V-y (Transversal) | V-z (Vertikal) |
|--------------------|-------------------|------------------|
| 37.13 mm/s | 22.35 mm/s | 4.89 mm/s |
| 1.1 Hz | 5.0 Hz | 10.1 Hz |
| 742.61% von Limit | 447.02% von Limit | 97.41% von Limit |

V-n (Vektorsumme): 37.73 mm/s

SPEKTRALANALYSE - KOMPONENTEN FFT



| Kanal | Spitzwert | Spektrum 25% | Spektrum 50% | Spektrum 75% |
|-------|------------|--------------|--------------|--------------|
| X | 37.13 mm/s | 1.3 Hz | 3.3 Hz | 12.4 Hz |
| Y | 22.35 mm/s | 2.5 Hz | 5.0 Hz | 21.9 Hz |
| Z | 4.89 mm/s | 16.1 Hz | 36.8 Hz | 57.8 Hz |

SPEKTRALANALYSE - FFT (DIN 4150-3)

